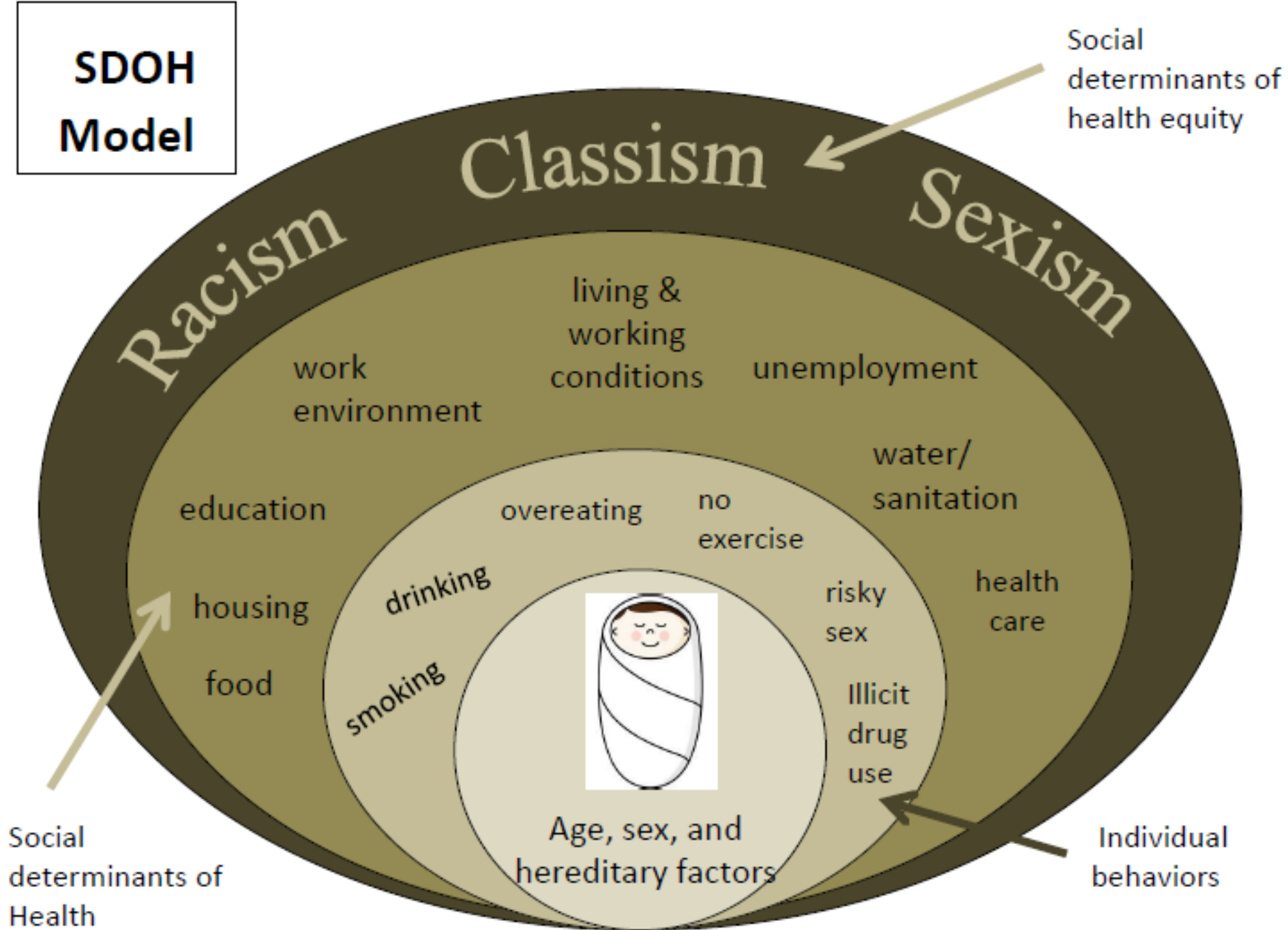


No One's Back Yard: Environmental Justice Curriculum

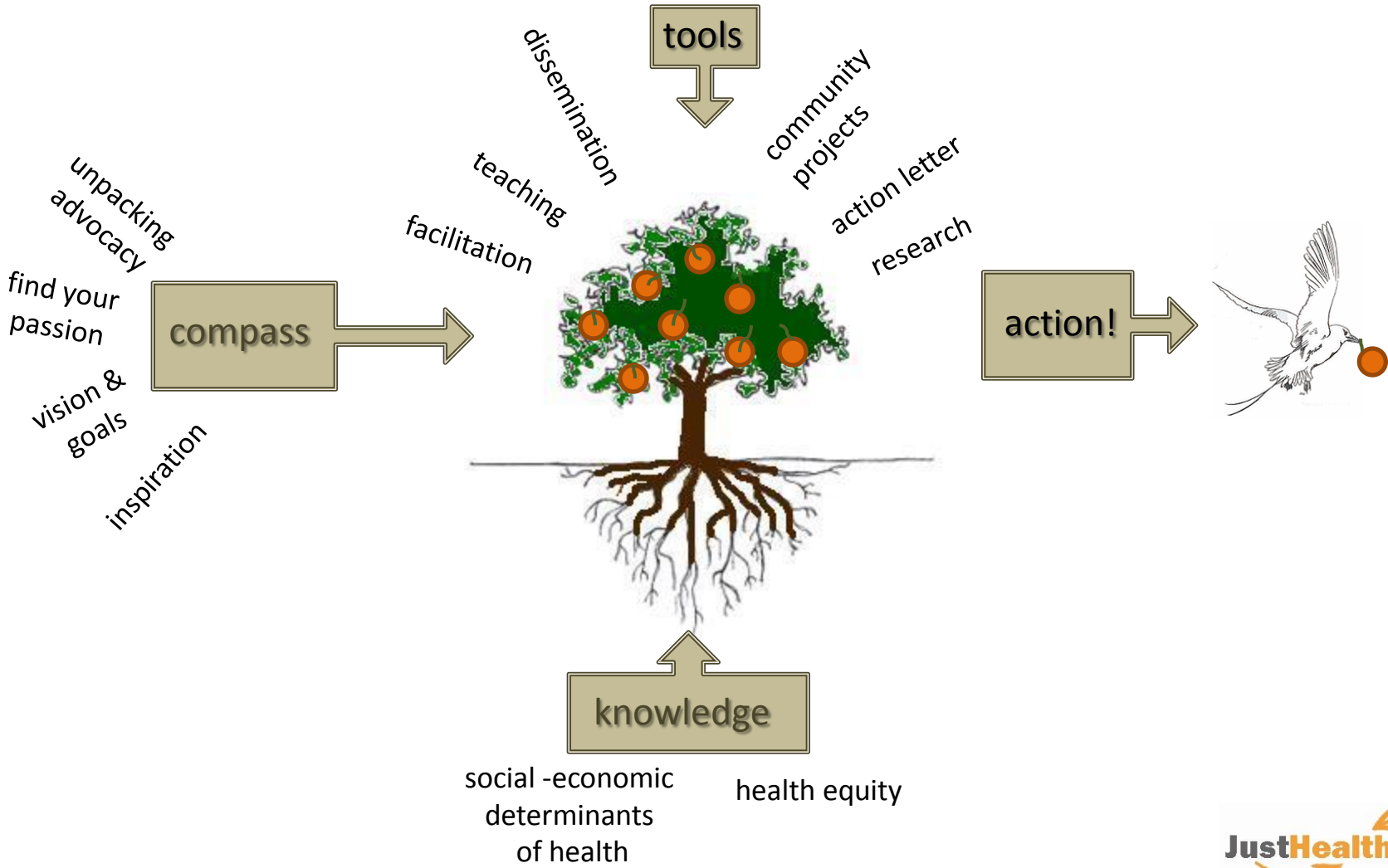


Linn Gould, MS, MPH
2016 Green-Duwamish Watershed Symposium
February 29, 2016

**SDOH
Model**



Just Health Action Teaching Framework



Eight EJ lesson plans: Piloted with two youth groups from Duwamish Valley



Student Teen Employment Program (STEP)



Duwamish Valley Youth Corps



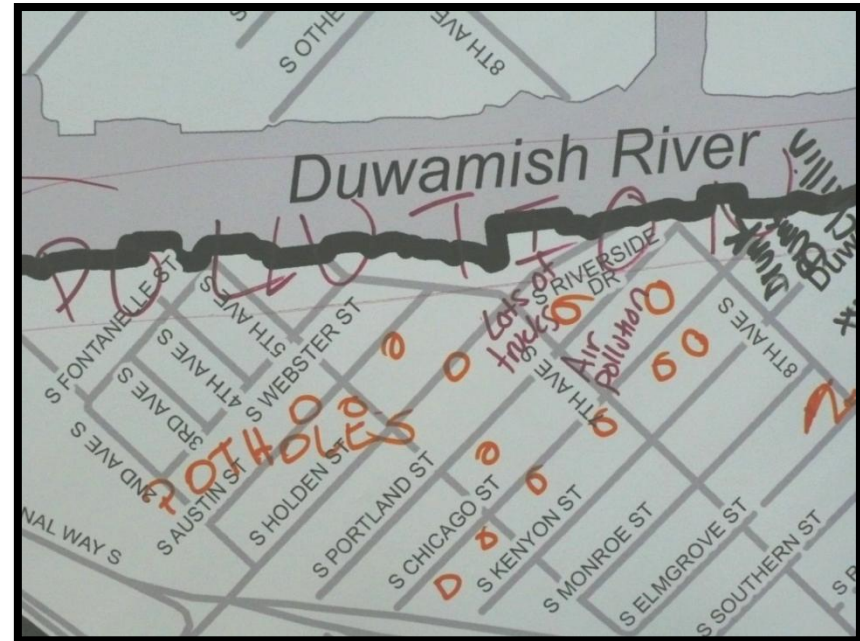
This product was funded through a grant from Washington State Department of Ecology. While these materials were reviewed for grant consistency, this does not necessarily constitute endorsement by the Department of Ecology.



Lesson Plan 1: What makes your community healthy/unhealthy?



Paulina Lopez/DRCC



Lesson Plan 1

Health Mapping

Where is our neighborhood healthy?

Where is our neighborhood unhealthy?

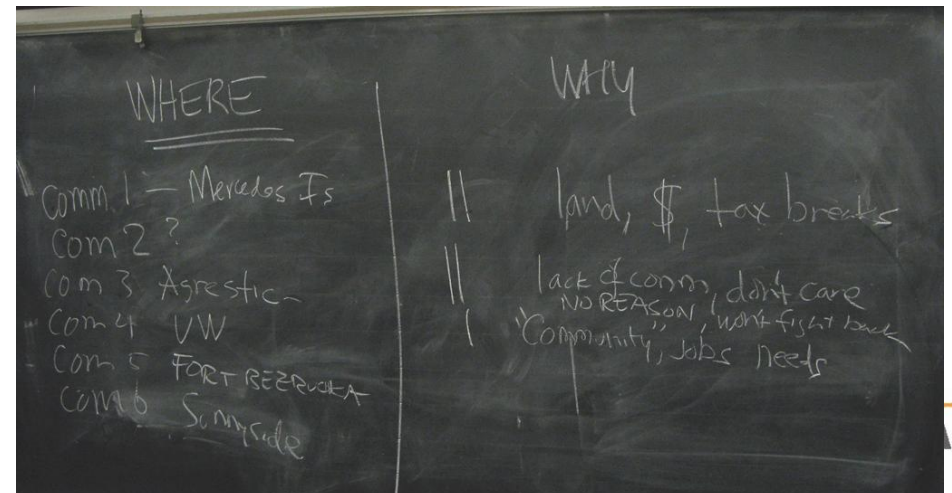
What makes Georgetown *healthy* and *unhealthy*?



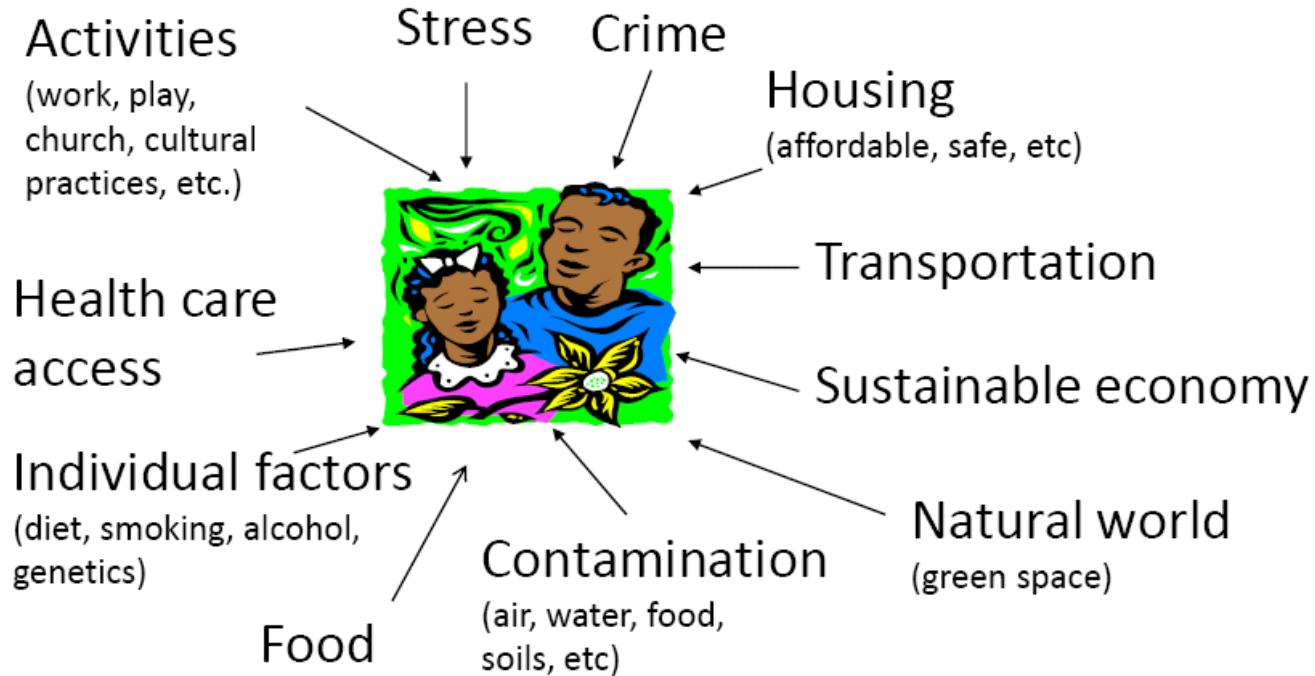
Lesson Plan 2: Whose Backyard? Toxic Waste meeting



Vote where toxic waste should go



ENVIRONMENTAL JUSTICE



“The environment is everything: where we live, work, play, go to school, as well as the physical and natural world. And so we can’t separate the physical environment from the cultural environment.”

(Robert Bullard, 1999)

Lesson Plan 3: Equality vs equity



Equality

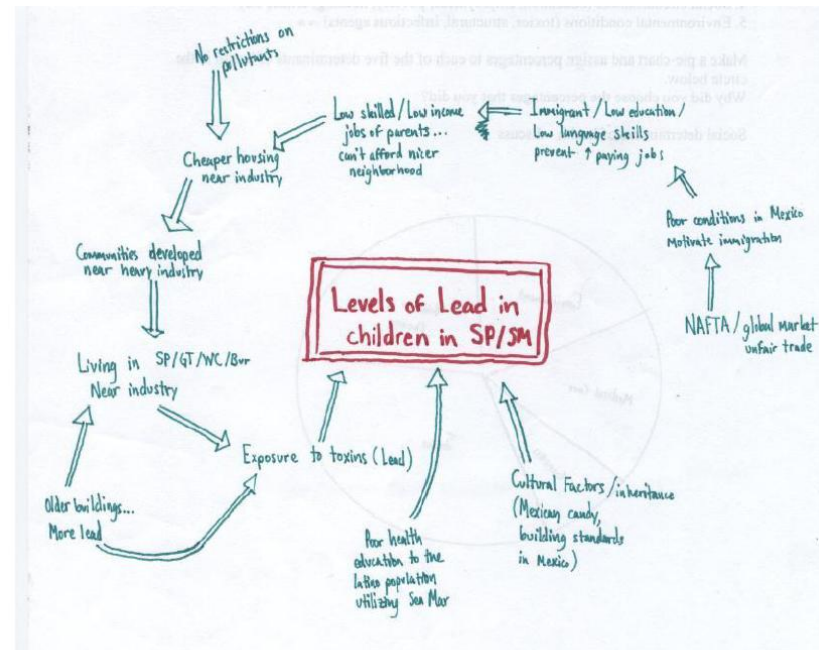
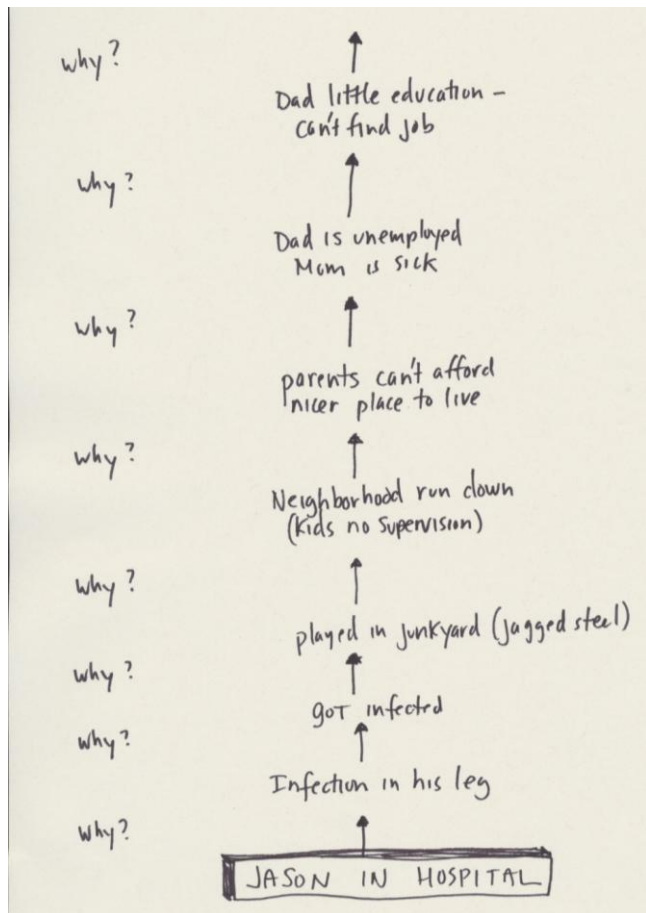


Equity

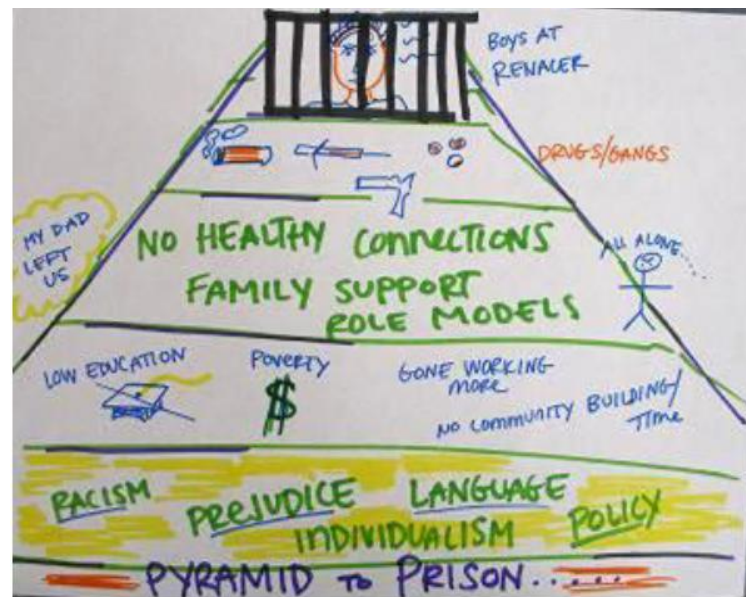
Lesson Plan 4:

“Causes of the Causes”:

What are the root causes of the problem?



Causes of the Causes Diagramming: Levels of lead in children in South Park, Washington



Causes of the Causes diagramming: Pyramid to prison for South Park youth

Lesson Plan 5: Mapping Environmental (In)Justice

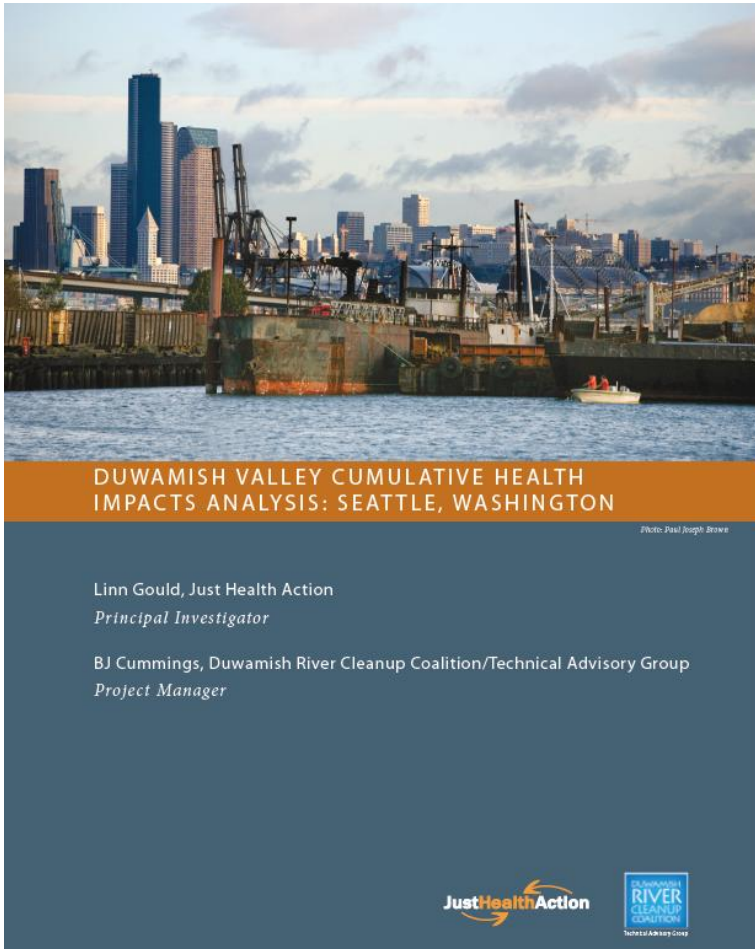
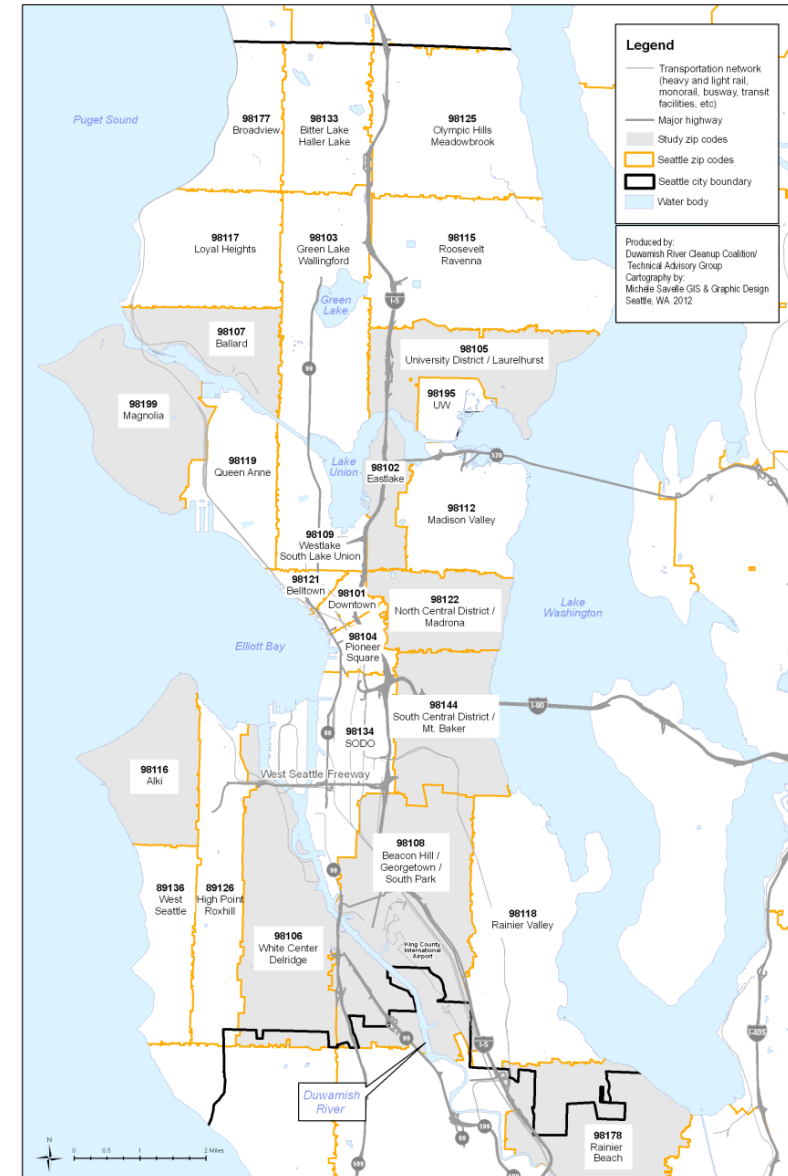


Figure 1. ZIP codes included in the Duwamish Valley Cumulative Health Impact Analysis



Mapping Environmental Impacts

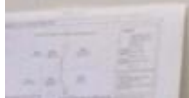
DCID economic
GRP 1

SENSITIVE POP>
GRP 2

ENV EXPOSURES
GRP 3

ENV EFFECTS-
BUILT ENV
GRP 4

PUBLIC HEALTH
GRP 5



Cumulative Effects – Imagine....



+



+



+



+



+++++

OR



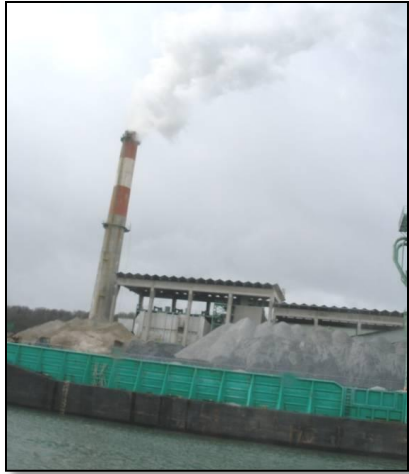
+



+



+



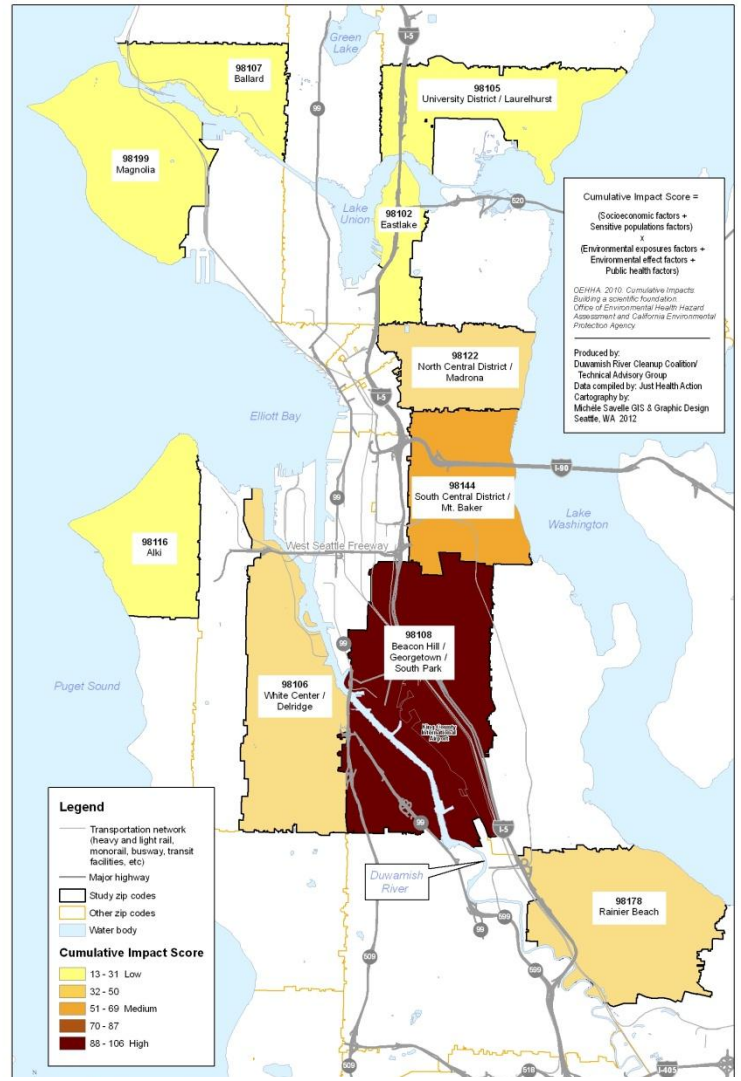
+



++++

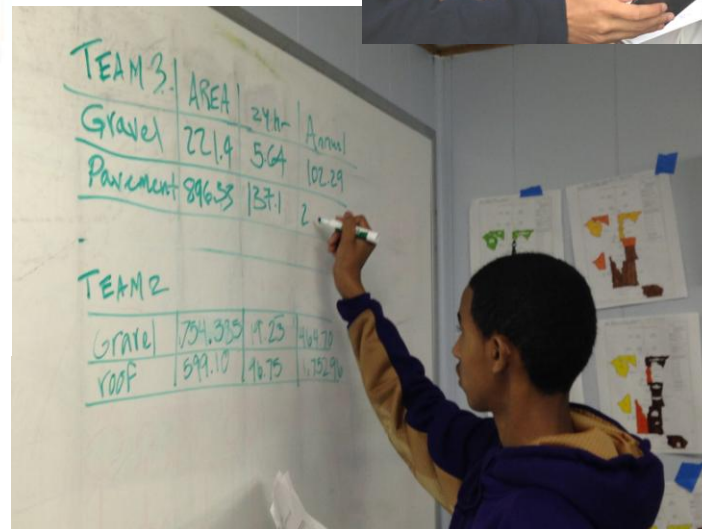
Figure 17. Cumulative Impact Score by ZIP Code, Seattle, Washington

Lesson Plan 6: Seattle Cumulative Impact Analysis Results

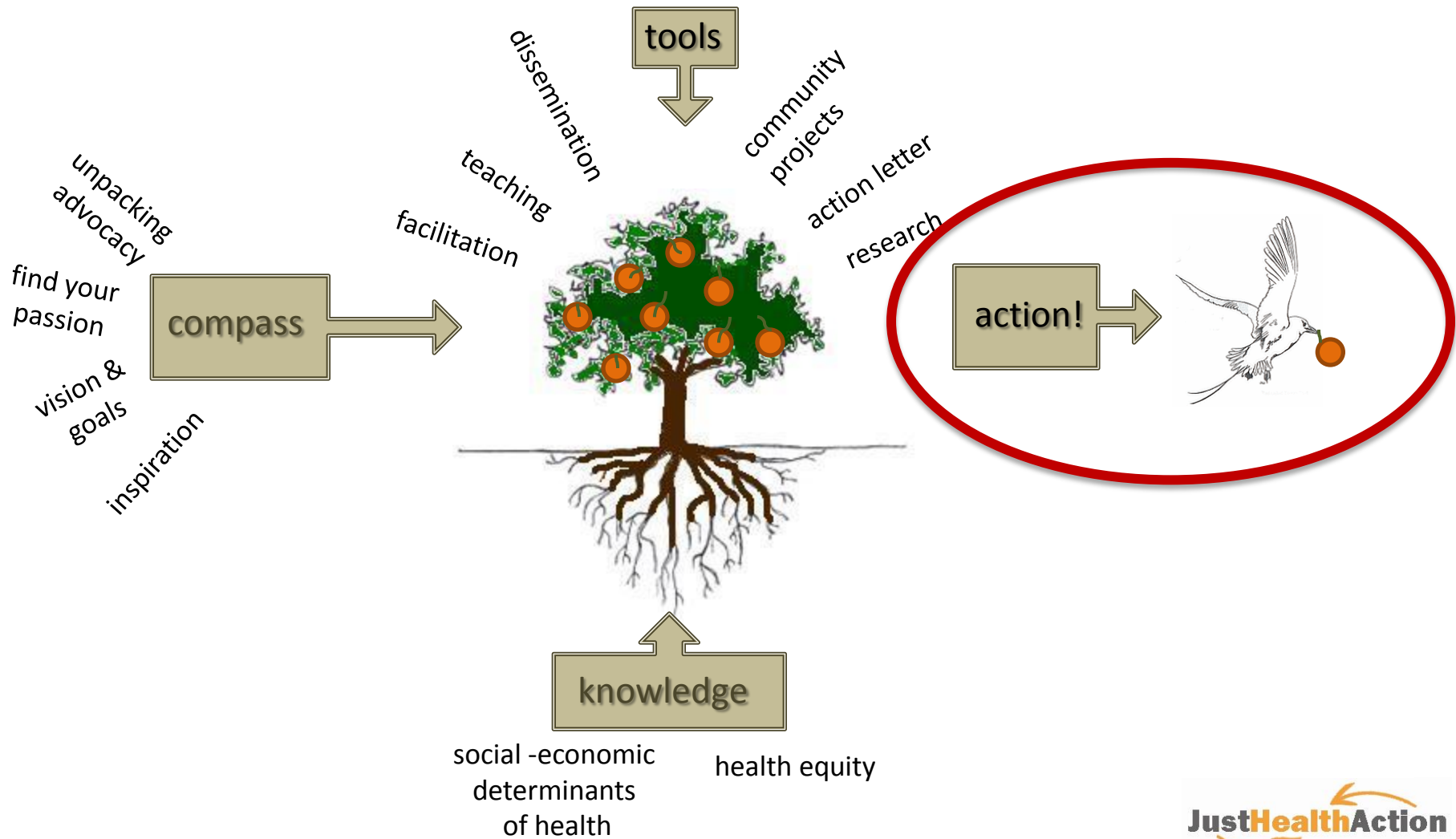


Component	98108 Beacon Hill Georgetown South Park	98144 South Central District Mt Baker	98178 Rainier Beach	98106 White Center Delridge	98122 North Central District Madrona	98102 Eastlake	98107 Ballard	98105 University District Laurelhurst	98116 Alki	98199 Magnolia
CUMULATIVE IMPACT SCORE	106	66	50	46	43	30	28	21	19	13

Lesson Plans 7 & 8: Green infrastructure – What is it and what are the equity issues in Seattle?



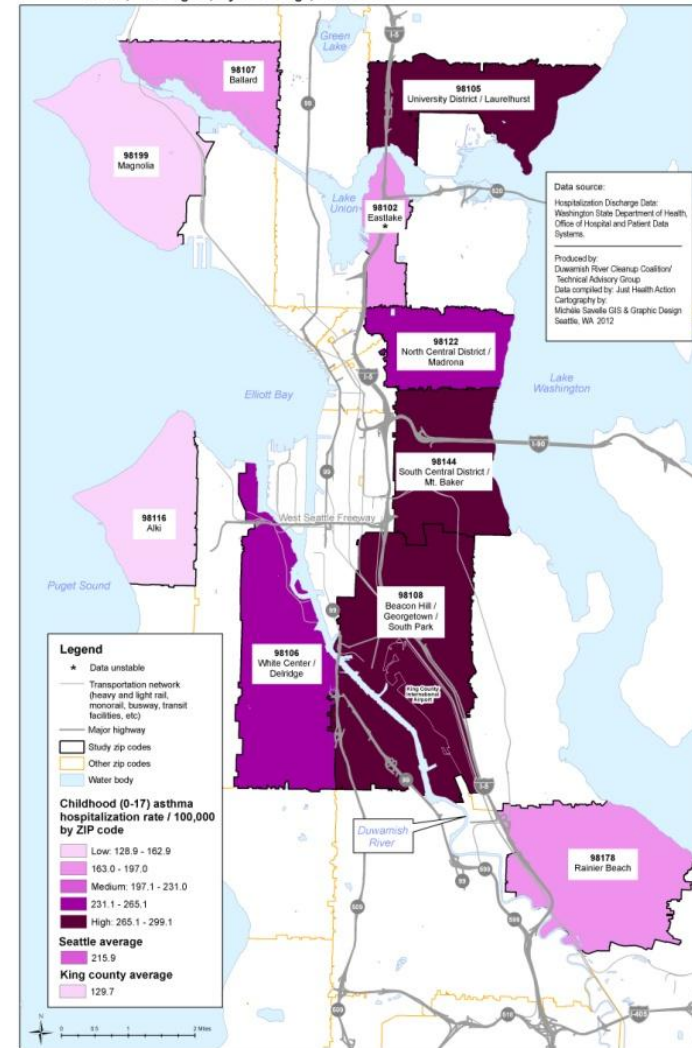
Just Health Action teaching framework



ACTION: Taking the results to Dow Constantine



Figure 15. Childhood (0-17) Asthma Hospitalization Rate per 100,000, by ZIP Code
Seattle, Washington, 5-year average, 2006-2010



Childhood asthma hospitalization rates

ACTION: 8thth Ave Regulator Station: Installing cistern and rain garden



ACTION Marra Farm: Installing rain garden and two cisterns



ACTION: Community cleanup



Safe needle dispensation

ACTION: Rain garden maintenance; Free tree planting campaign



No One's Backyard url:

<http://justhealthaction.org/resources/jha-curriculum-material/>



[Home](#) [About Us](#) [Services](#) [Contact Us](#) [Resources](#) [Support JHA](#) [Blog](#)

JHA Curriculum Material

- [Just Health Action lesson plan list](#)
- [JHA's Environmental Justice curriculum \(New!\)](#)
 - [Introduction/Background: Whose Backyard?](#)
 - [Lesson Plan 1: What Makes a Community Healthy?](#)
 - [Lesson Plan 2: Whose Backyard? Environmental Justice: Toxic Waste Management Meeting](#)
 - [Lesson Plan 3: How are Equity and Equality different?](#)
 - [Lesson Plan 4: Causes of the Causes: What are the Root Causes of this Problem?](#)
 - [Lesson Plan 5: Environmental Justice Matters: Mapping ZIP Codes \(Part 1\) plus Lesson Plan 5 tables](#)
 - [Lesson Plan 6: Environmental Justice Matters: Mapping Cumulative Impacts \(Part 2\)](#)
 - [Lesson Plan 7: How does Green Infrastructure Help Reduce Stormwater Pollution?](#)
 - [Lesson Plan 8: Equity Impact Review: Green Stormwater Infrastructure in Seattle](#)
- [Just Health Action "Causes of the Causes" Diagramming Methodology](#)
- [Just Health Action "Solutions to the Causes" lesson plan](#)
- [JHA Advocacy Continuum](#)
- [Health Equity Elevator Speech](#)
- [Facilitating Health Equity Conversations](#)
- [Facilitation Questions for Unnatural Causes...is inequality making us sick?](#)
- [IsM poem from JHA's *How racism is embodied* curriculum](#)
- [Resources used for JHA's *How racism is embodied* curriculum](#)



Thank You!

Contact:

Linn Gould

gouldjha@gmail.com

www.justhealthaction.org

(206) 324-0297



Duwamish Valley Youth Corps

Co-developers and co-teachers

- Linn Gould (Just Health Action)
- Michael Lewis (Bellwether Design)
- Carmen Martinez (Duwamish River Cleanup Coalition)
- Paulina Lopez (Duwamish River Cleanup Coalition)
- Vicky Raya (Environmental Coalition of South Seattle)
- Tara Bostock – (University of Washington MPH candidate)
- Dana Canfield (Sea Mar Community Health Centers HealthCorps volunteer)
- Wendy Ewbank (Seattle Girls School)
- John Deichsel
- Katie Bell Schnepf (Antioch University)
- Cari Simson (Urban Systems Design)
- Kyong Soh (Solid Ground - Marra Farm)
- Youth participants

Acknowledgements

Curriculum reviewers

- **Yalonda Sinde** (Executive Director, Association of Environmental Health Academic Programs)
- **Millie Piazza** (WA State Department of Ecology)
- **Wendy Ewbank** (Seattle Girls School)
- Shanyanika Burton (Seattle Parks & Recreation Good Food program)
- Belinda Chin (Seattle Parks & Recreation Environmental Learning Center)
- Darlene Flynn (Policy Lead – Race and Social Initiative, Seattle Office for Civil Rights)
- Michael Lewis (Bellwether Design)
- Tiffany McDowell (Adler Institute on Social Exclusion)
- Vicky Raya (Environmental Coalition of South Seattle)
- Arun Sambatoro (King County Office of Equity and Social Justice)
- Jo Sullivan (King County Waste Water Treatment Division)

Funding or in-kind assistance

- **Washington State Department of Ecology Public Participation Grant**
- Duwamish River Cleanup Coalition
- Homegrown Organics (John Coghlan and Ethan Holzer)
- King County Wastewater Treatment Division (Bibiana Ocheke-Ameh)
- Plumb Level Square (Debbie McNeil)
- South Park Community Center (Ramon Franklin) and Seattle Parks & Recreation Student Teen Employment Preparation (STEP) program
- South Park Neighborhood Center for providing the teaching venue