

Using a Critical Health Literacy Framework to Take Action on the Social Determinants of Health to Achieve Health Equity



Linn Gould, MS, MPH

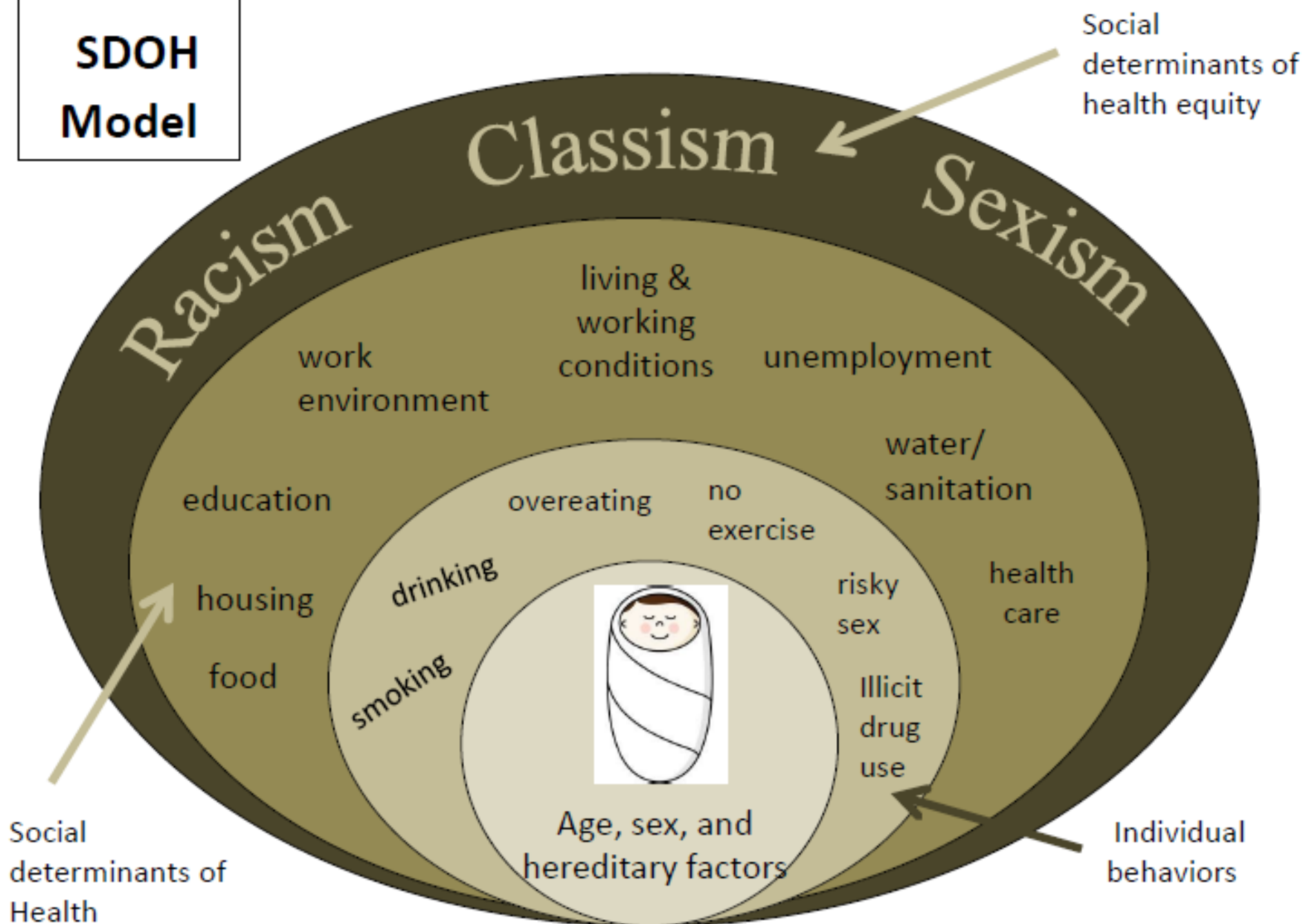
Just Health Action

January 27, 2021

Today

- Critical health literacy (CHL)
- JHA CHL framework
- CHL and power building
- Operationalizing CHL in the Duwamish River Valley

SDOH Model



three levels of health literacy

1. functional



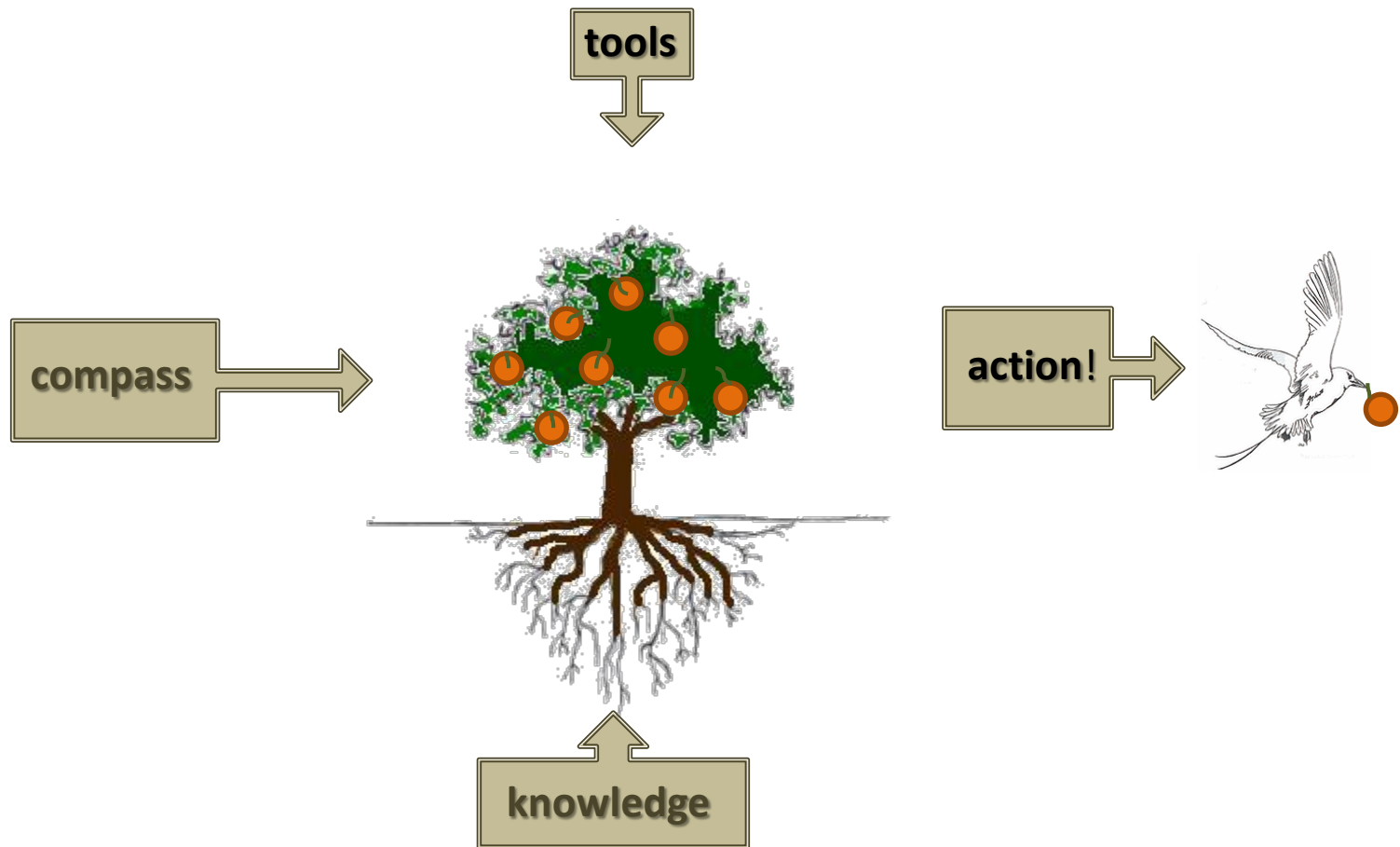
2. interactive



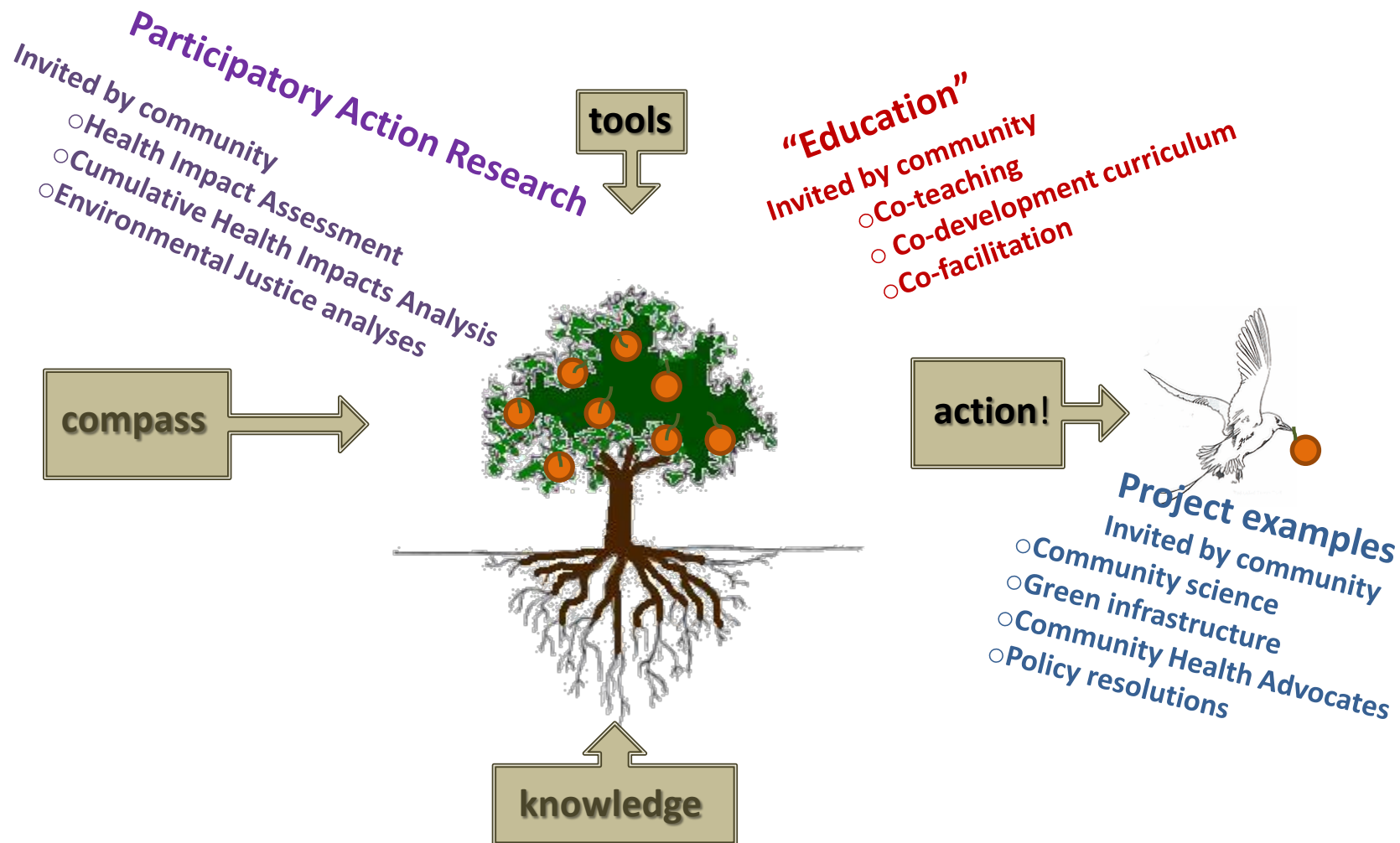
3. critical



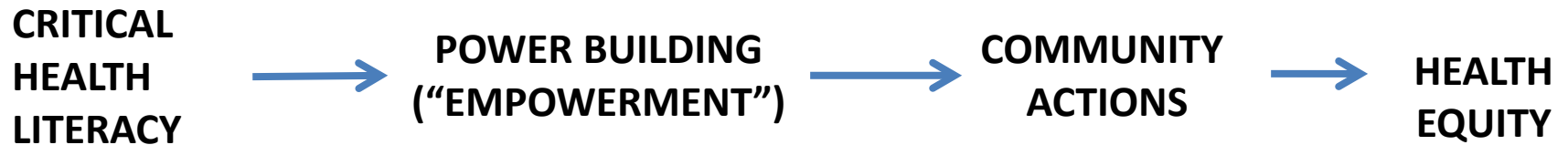
JHA critical health literacy framework



Operationalizing JHA CHL framework



JHA Power Building Model in the Duwamish Valley

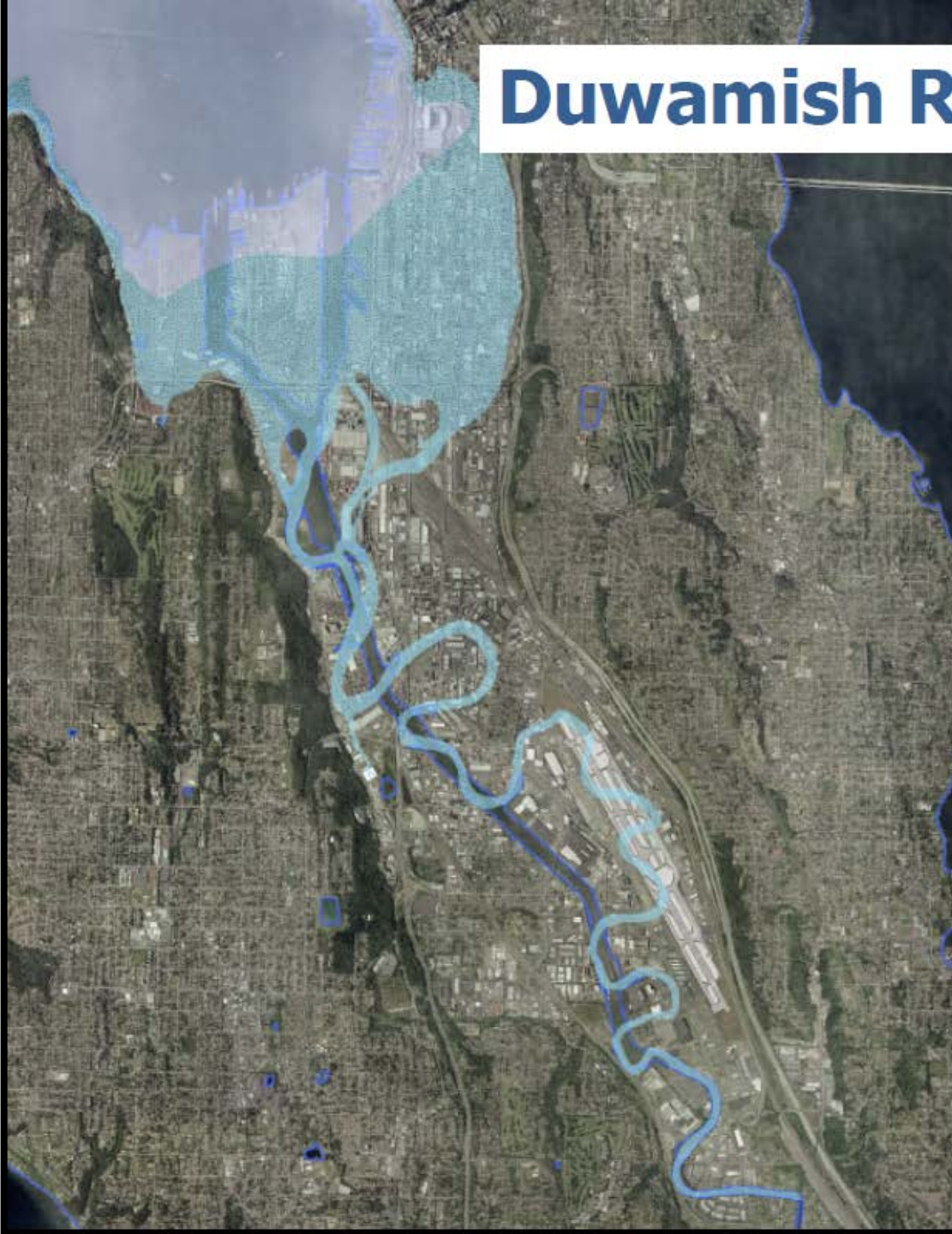


Seattle, WA – Duwamish Valley





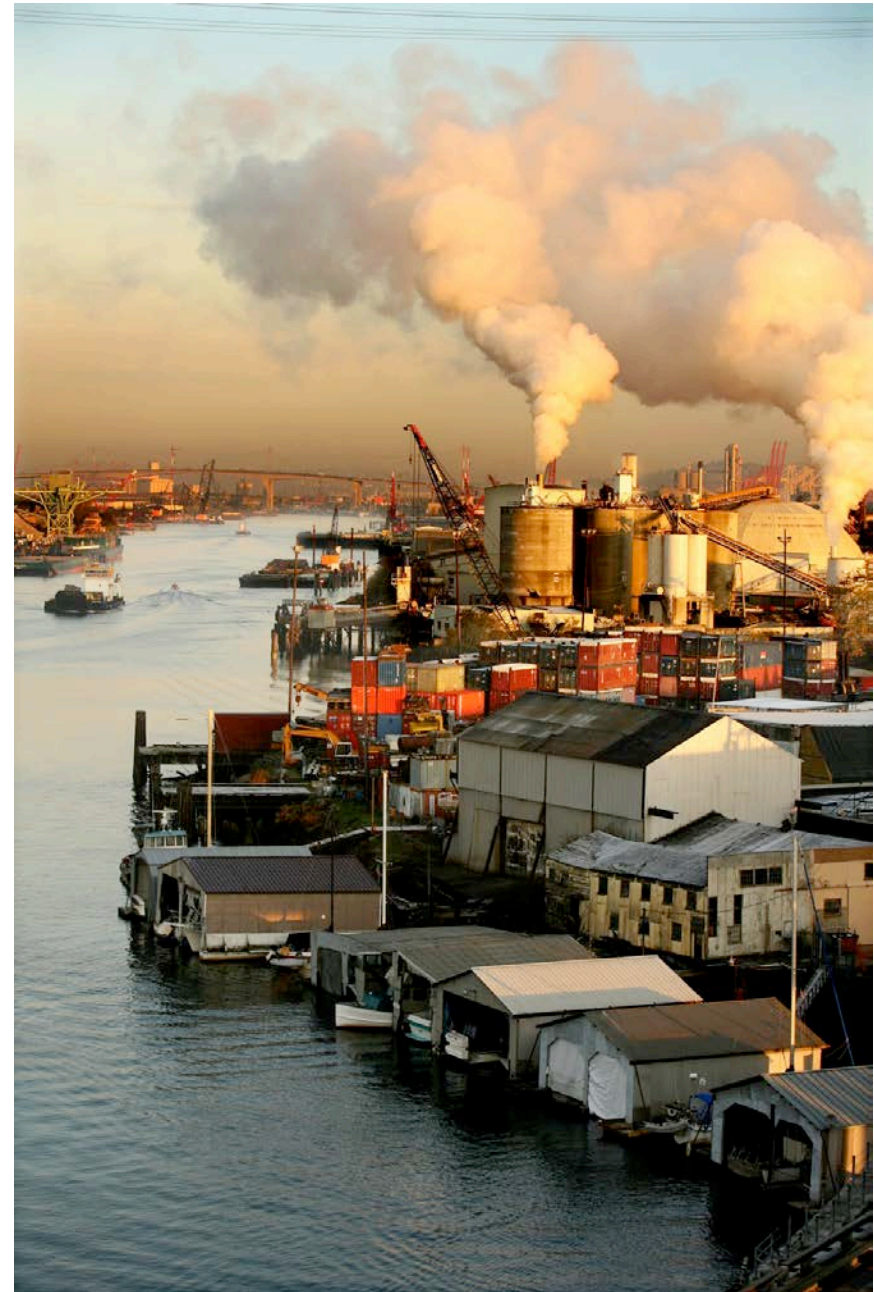
Duwamish River Then & Now



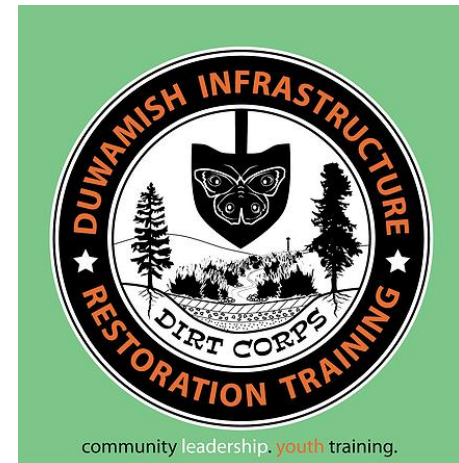
Light blue
river before
1909

Dark blue
current
waterway

Duwamish Valley Industrial Base and Superfund Site



Community Partners



Georgetown/South Park disparities

Indicator	Georgetown/ South Park Census tracts 109 and 112	Laurelhurst Census tracts 4100 and 4200	Seattle	King County
Life expectancy at birth (years)	73.3*	86.4*	81.5	81.5
Heart disease death rate per 100,000	202.9#	89.6*	138.4	137.8

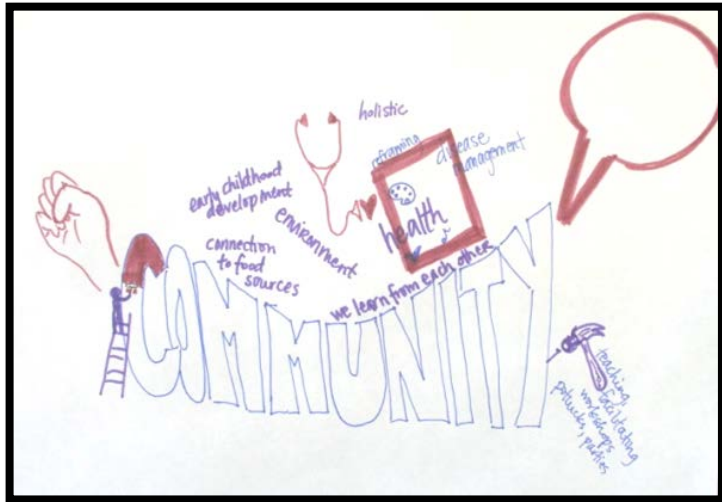
Source: Public Health Seattle & King County

*p=0.05 from both KC and Seattle average

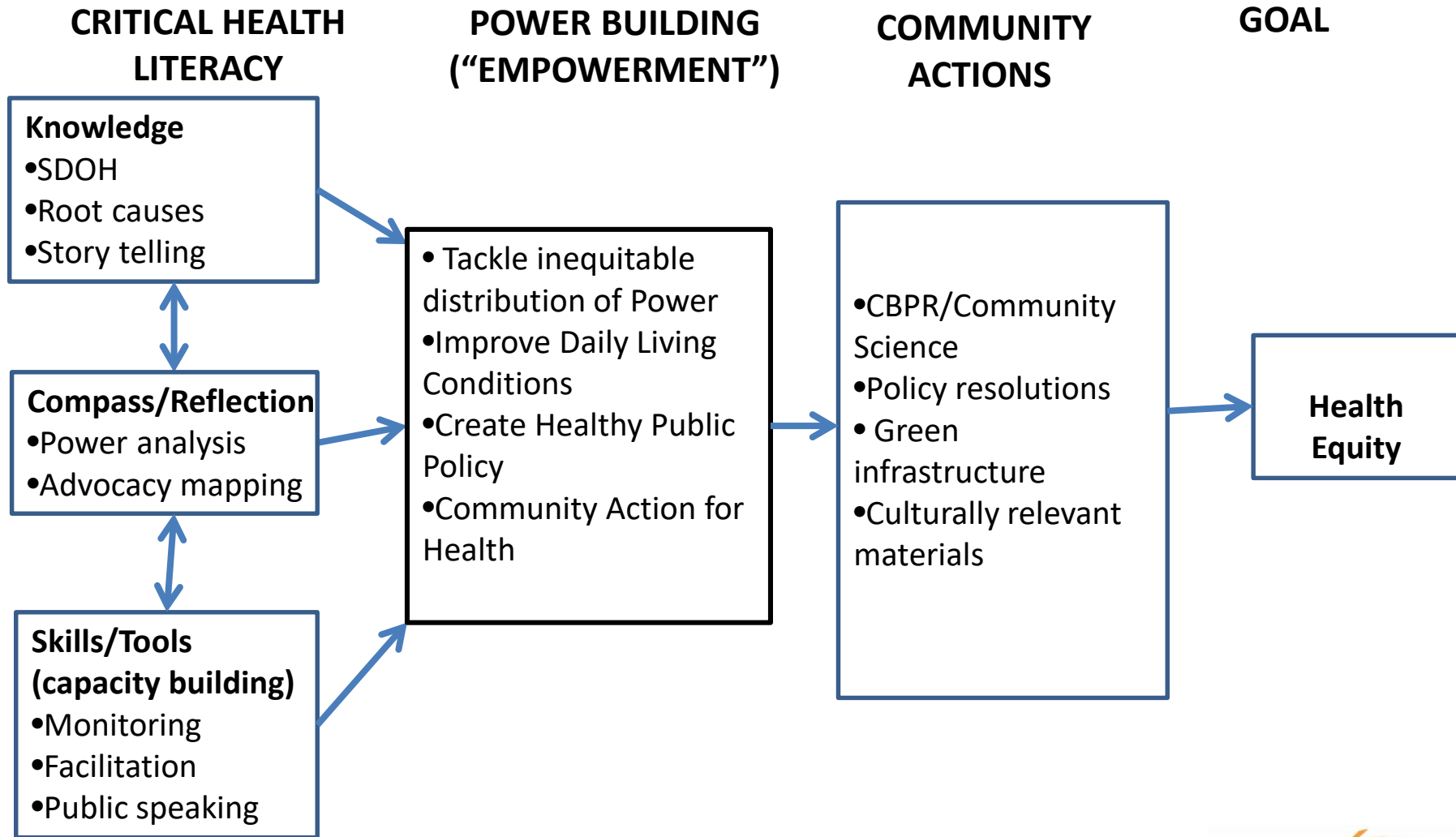
#p= 0.05 for KC average only

Gould & Cummings. Duwamish Valley Cumulative Health Impact Analysis (2013)

Assets too!



JHA Power Building Model in the Duwamish Valley



JHA CHL project examples

- Education: Pedagogical Frierian exercises
- Duwamish Valley Clean Air Program
- Policy Resolution with the Port of Seattle



Critical Health Literacy Training Manual

Train the Trainer

Pedagogical Exercises Developed by Just Health Action

www.justhealthaction.org

2015 14th Avenue East, Seattle, WA



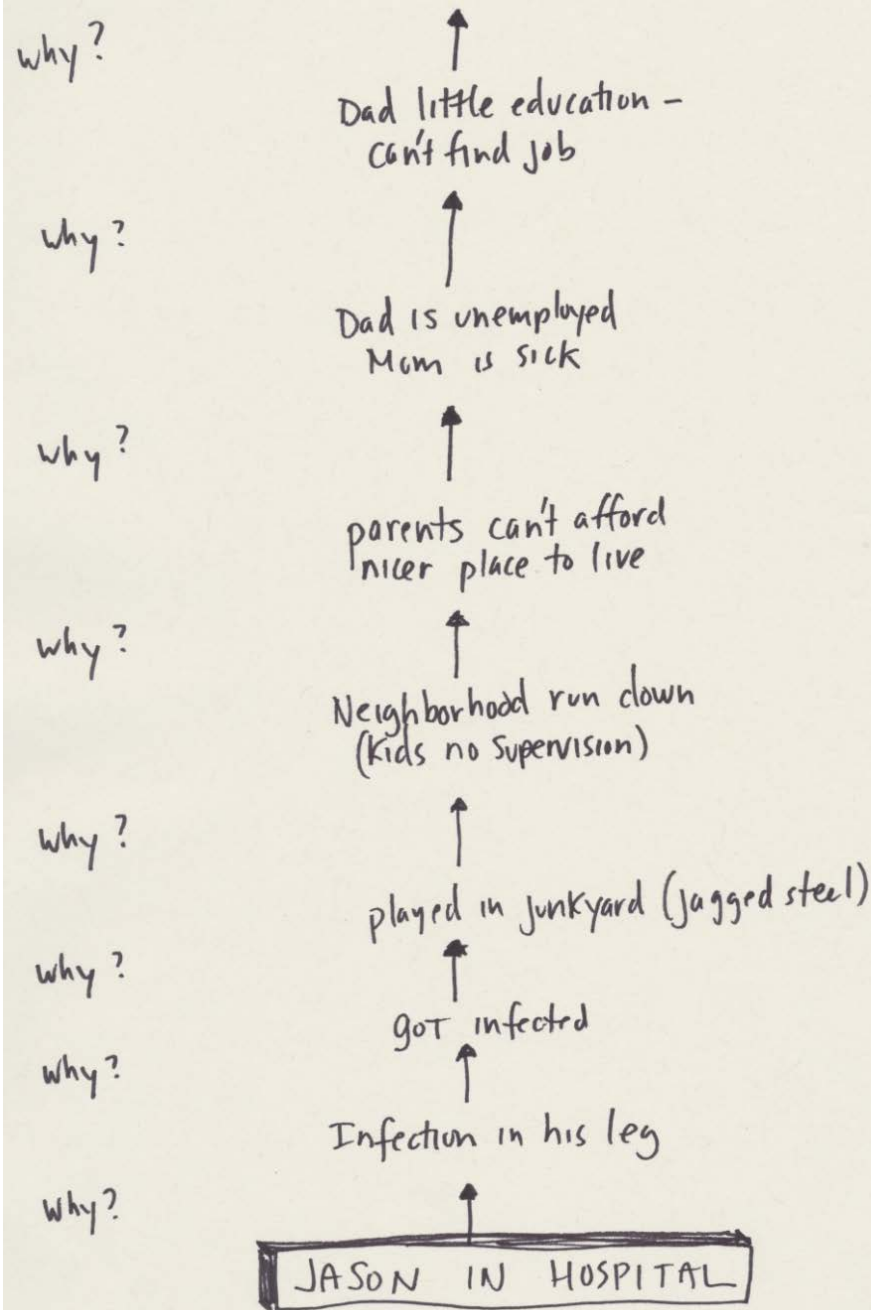
Bernalillo County Training



Health Mapping



Root Causes: Why is Jason in the hospital?



Community exercises

WE EXPECT:

EQUITY

FAIR TREATMENT, ACCESS,
OPPORTUNITY AND ADVANCEMENT FOR
ALL PEOPLE, WHILE AT THE SAME
TIME, STRIVING TO IDENTIFY AND ELIMINATE
BARRIERS THAT HAVE PREVENTED THE FULL PARTICIPATION
OF SOME GROUPS.

1. ELEVATE VOICES
BEEN PREVIOUSLY UNHEARD

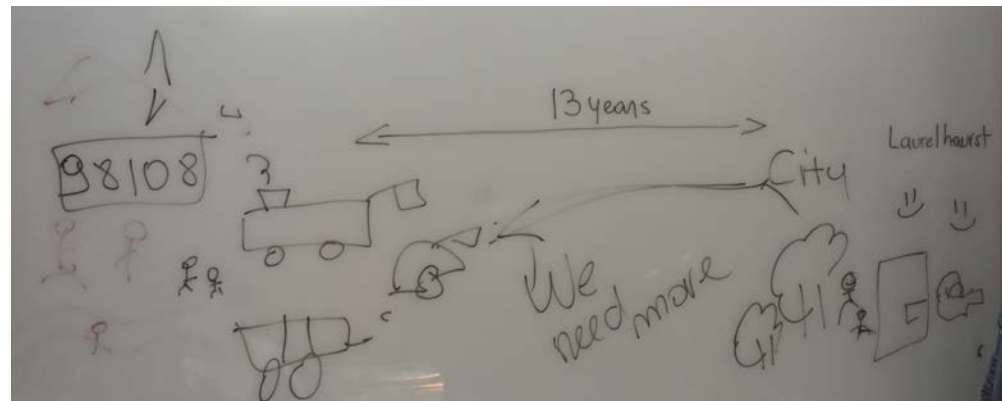
2. IMPROVING EQUITY INVOLVES: INCREASING JUSTICE AND
FAIRNESS WITHIN THE PROCEDURES AND PROCESSES OF
INSTITUTIONS OR SYSTEMS. AS WELL AS
FAIR, INTENTIONAL
DISTRIBUTION OF RESOURCES
human rights / basic needs

who does this phrase?

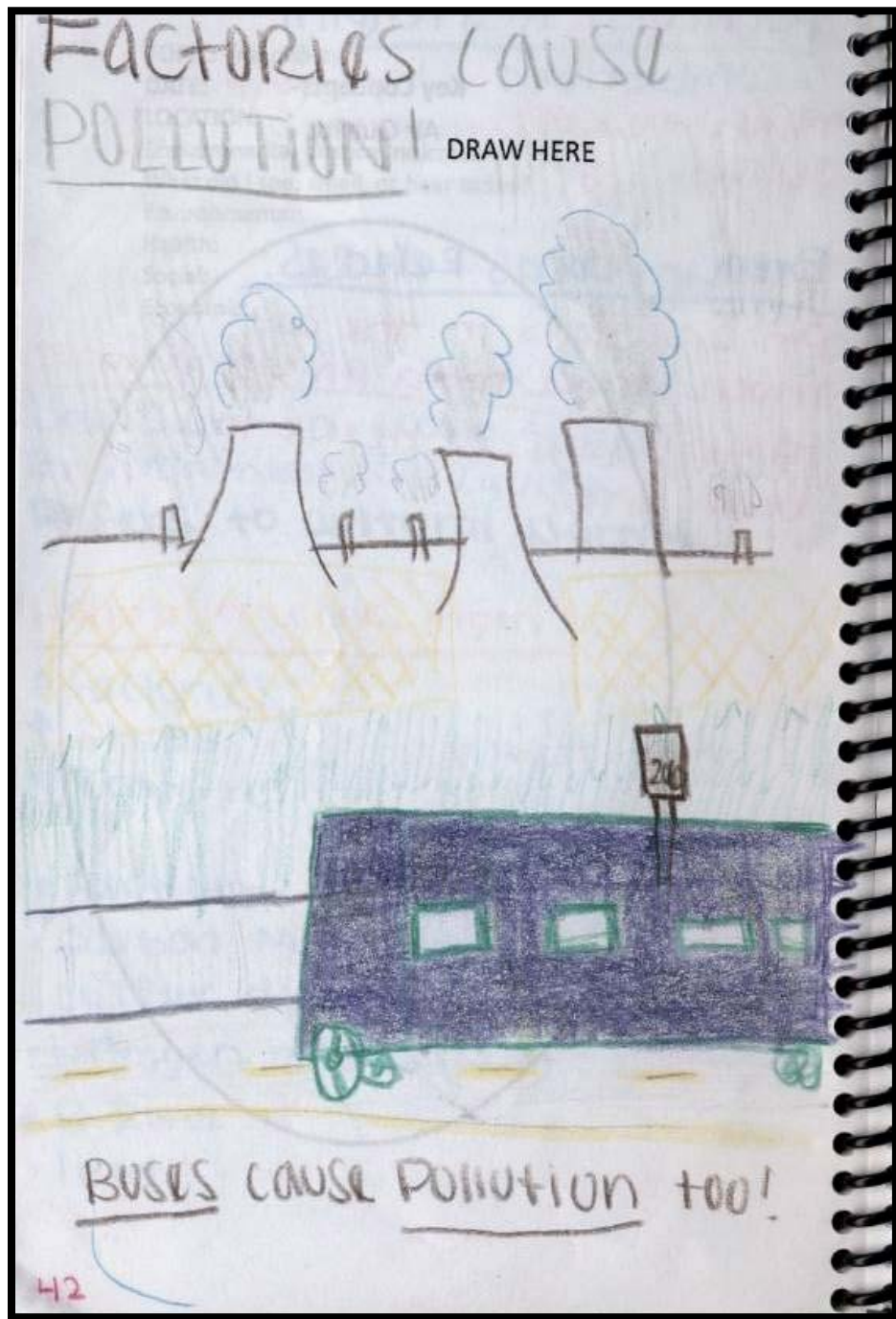
ESVAC
play in
field

Empoderamiento
Comunitario

- Juntar a la comunidad
y transmitir información y
conocimiento y herramientas
para tomar acción, para
lograr un objetivo.



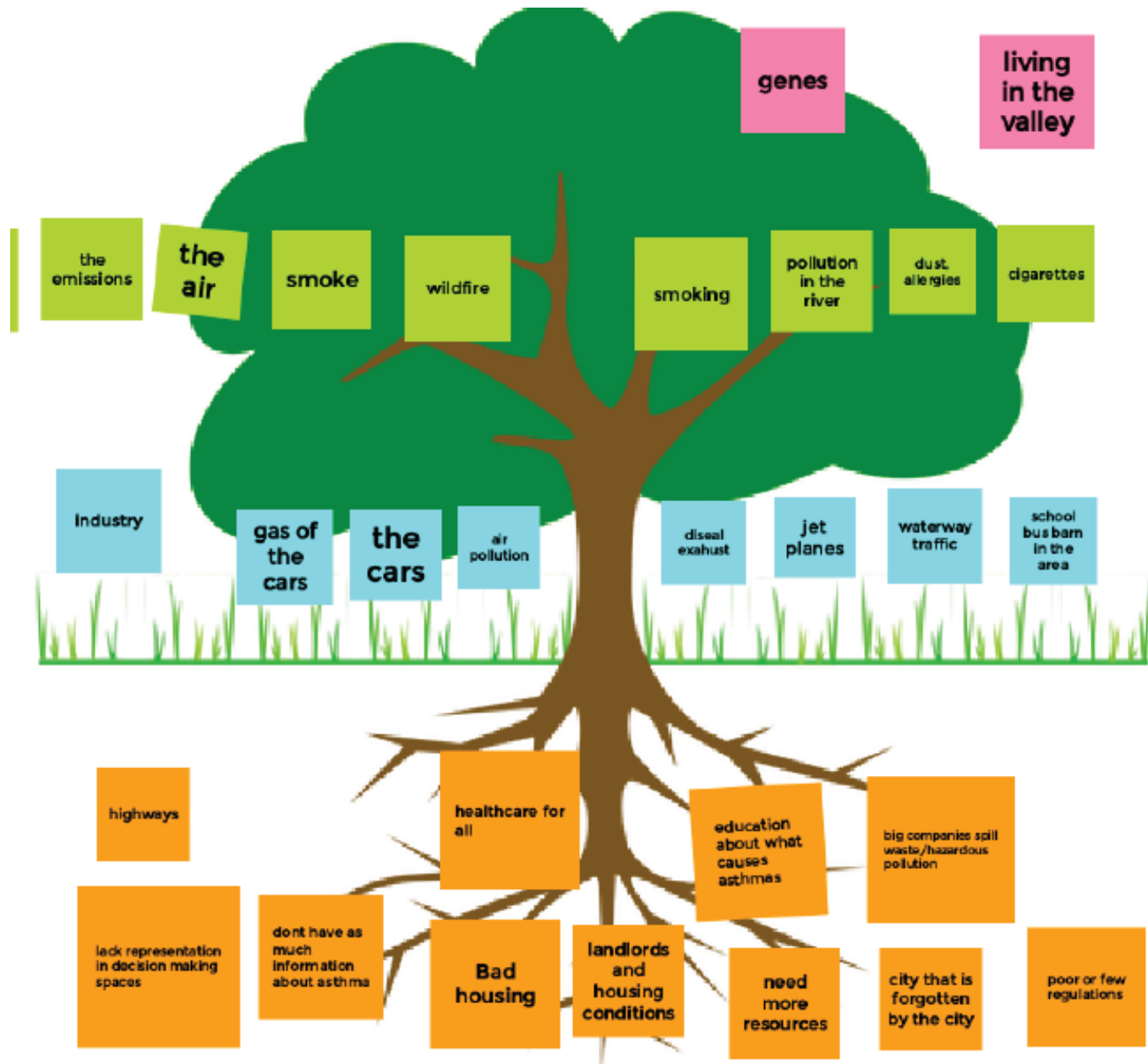
Clean Air Program



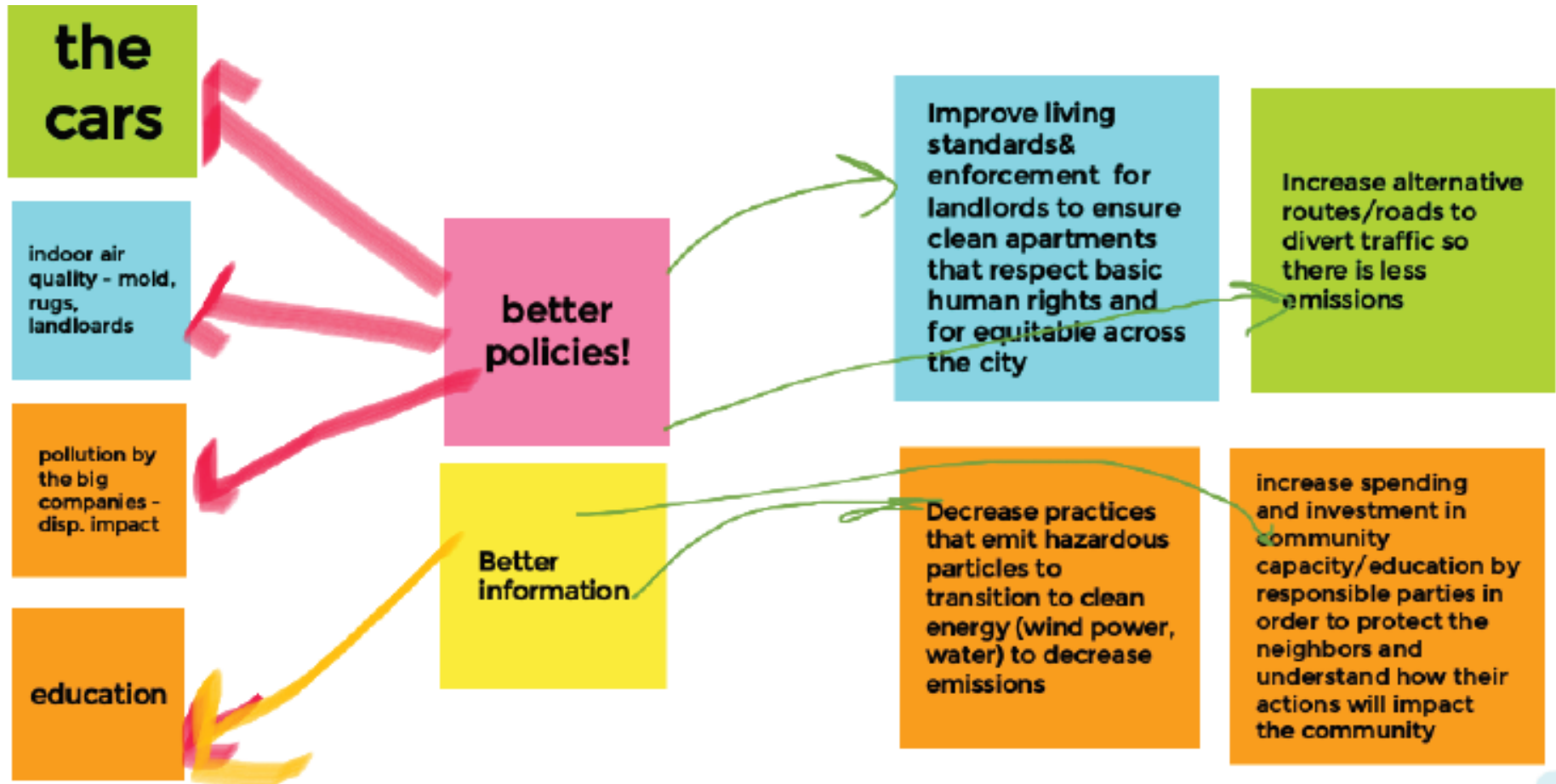
Clean Air Partners



Root
Causes:
Why
does
Sophia
have
asthma?



What Strategies for Action?



YOUTH SCIENTISTS DISCOVER INDICATORS OF HEAVY METAL POLLUTION IN DUWAMISH VALLEY MOSS THROUGH A COMMUNITY SCIENCE PROJECT



DUWAMISH
RIVER
CLEANUP
COALITION

Just**Health**Action

Policy Change at the Port of Seattle



Port Community Action Team (PCAT)



Port of Seattle Commissioner Courtney Gregoire with PCAT



Port of Seattle Resolution 3767: Duwamish Valley Community Equity Program



THANK YOU

CONTACT:

Linn Gould

Just Health Action

Seattle, WA

(206) 324-0297

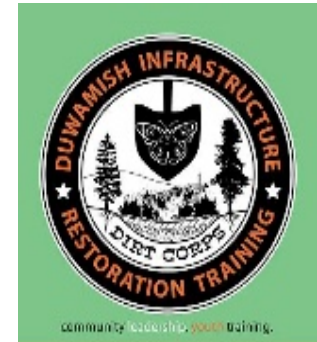
gouldjha@gmail.com

www.justhealthaction.org

Acknowledgements



Technical Advisory Group



Public Health
Seattle & King County



Sea Mar
Community Health Centers
Clínica de la Comunidad

Port
of Seattle®



SCHOOL OF PUBLIC HEALTH
UNIVERSITY OF WASHINGTON

King County

pscleanair.org
Puget Sound Clean Air Agency

Seattle Department of
Neighborhoods

ICHS
International
Community
HEALTH SERVICES

JustHealthAction